



2019

CAPABILITY STATEMENT



BESTBAR®

CONTENTS

4	ABOUT US
5	OUR VISION
6	PEOPLE & PARTNERSHIPS
8	INNOVATION
10	PROJECTS
12	REONET
16	SAFETY & HEALTH
21	OUR LOCATIONS

ABOUT US

TO REINFORCE AUSTRALIAN CONCRETE ON PROGRAM, IN TIME.

We are a leading steel reinforcement supplier in Australia, delivering a diverse range of reinforcement solutions to the civil, commercial and residential construction industries.

Best Bar Pty Ltd began operations in Perth, Western Australia in 1995 and continues to operate under the same management team.

OUR VISION

To employ outstanding people & develop partnerships that deliver innovative, safe, low cost rebar processing and exceptional customer service.

We will achieve this through strong partnerships with employees and other stakeholders, by engaging the hearts and minds of our employees through empowerment, respect and dignity.

By building mutually beneficial relationships we can achieve a strong, profitable, sustainable company and operational excellence through safe, secure, reliable, efficient, incident-free and environmentally sound operations.



PEOPLE & PARTNERSHIPS

Over the past 25 years, we have maintained our strong family culture by building lasting relationships with employees, sub-contractors and clients.

These relationships are based on an understanding that there is a job to be done and the best results will be delivered by a hard-working, motivated and experienced team.

We take great pride in our workforce which represents a diverse range of backgrounds and skills.

We will continue to work hard to attract, develop and retain excellent employees through a variety of initiatives.

We engage the hearts and minds of our employees and partners by building mutually beneficial relationships

300⁺
EMPLOYEES

Our people are our most important asset

1,400⁺
ACTIVE CUSTOMERS

Statistics over a 2 year period.

INNOVATION

Equipment & Capacity

We have purpose built, state of the art manufacturing facilities located in Melbourne, Sydney, Perth, Adelaide and Darwin.

We also have distribution centres located in Wangara and Hazelmere (WA), Somerton and Keysborough (VIC) and Smeaton Grange (NSW). The group has in excess of 20,000mt capacity per month at the various sites.

All processing sites are equipped with automated shears, automatic stirrup benders, mesh cutters, single and double headed benders, radius machines and threaders.

This; together with our dedicated workforce, demonstrates our ability to deliver large, complex infrastructure projects across Australia.

Scheduling & Estimating

During the primary stages of construction, attention to detail when scheduling is a crucial step to kicking off a steady flowing project; ensuring milestones are met. Failure to do this means delays can occur and become a costly procedure.

Our scheduling team is diligent in providing efficient & accurate schedules to meet your project requirements.

We employ experienced in-house and contract schedulers who can identify issues before project commencement helping save valuable time and money. Furthermore, a dedicated estimator is assigned to each project to ensure estimate tender closing dates are met.

Our scheduling coordinator is responsible for the provision of a speedy high-quality scheduling service and directly co-ordinates all customer production and delivery requirements.

Regular site visits by your project coordinator ensures a personal service gives you a single point of contact throughout the duration of your project.



99.1%

Scheduling Accuracy Rate*

20,000

Tonnes scheduling capacity per month

*Average Statistic over a 2 year period.

CUSTOMER COMMITMENT

DELIVERY

Receiving your reinforcing delivery on time is crucial when managing large infrastructure projects. This is why we put a large focus on delivery, with a 94.6% DIFOT over the last 2 years.

SUPPORT

We're here to guide, suggest and provide our reinforcing knowledge to your project. By supporting our clients through each building stage we are able to build lasting relationships with companies of all sizes.

TRANSPARENCY

Allowing builders to clearly understand several aspects of their reinforcing order, from pricing breakdowns to complete order tracking on our online platform Reonet.

ACCURACY

With our extensive team of experienced schedulers, estimators and machine operators you have the assurance of accurate steel products delivered to site 99.1% of the time.

Quality

At Best Bar, we aim to consistently provide services that meet the requirements of our customers, in terms of on-time delivery, process and service quality. We have a certified Quality Management System, which meets the requirements of the Australian and International Standard AS/NZS ISO 9001.

Our Quality Management System has been developed to improve internal efficiency, boost customer confidence, increase staff morale and productivity; as well as identify system problems and devise new ways to solve problems and promote continuous improvement.

Individual employees and management work within the parameters of specific systems, procedures and processes.

We ensure our employees understand and comply with the Quality Management System policies, safe operating procedures and work instructions as they apply to their day-to-day functions.

Our integrated approach to QHSE helps us to identify risk areas and to eliminate or manage these risks to ensure we are able to deliver excellent products and services on a consistent basis. We are committed to continuously improving our products and services.

By monitoring and objectively measuring our performance, we can better manage our business. All our reinforcing steel is **ACRS** (Australasian Certification Authority for Reinforcing and Structural Steels) accredited to guarantee quality processed material is being fixed into your project.



PROJECTS

We have been honoured to be involved in many projects throughout Australia; from domestic home builds to some of the largest infrastructure projects in Australia. We've helped builders reinforce projects on program and in budget, so they can successfully deliver to their client.

WESTERN AUSTRALIA WHEATSTONE PROJECT

41,000

Reinforcing Tonnes

Over a 3.5 year period, we supplied 41,000 tonnes of reinforcing steel to the Wheatstone project in Western Australia.

Including, 1,700 tonnes of complex precast material was produced for a local precast contractor and used in the assembly of drainage channels in Perth to reduce onsite labour costs.

The Wheatstone project is one of Australia's newly emerging Liquefied Natural Gas (LNG) hubs, located 12 kilometres west of Onslow, WA.

The LNG and condensate export loading arms at the Wheatstone project. Image: Chevron

VICTORIA

DESALINATION PROJECT

10,000

Reinforcing Tonnes

We supplied 4,800 Tonnes of reinforcing steel to the Victoria's Desalination Project over a 24 month period. 1,500 Tonnes of steel was prefabricated in our Truganina facility and delivered to site over a 12 month period.

When working with our client on the project for Theiss Degremont, our skilled and experienced team recommended using prefabricated elements which significantly sped up the build time.

Seeing the value in this, walls were created for the Sea Water Lift pump Station which included complex mats of N32 at 150 centres, 12000 mm long x 4800 mm wide.



First Image: Desalination project in December 2014

NEW SOUTH WALES

GREEN SQUARE PROJECT

2,500

Reinforcing Tonnes

The Green Square project is by Mirvac and UrbanGrowth; a new Town Centre, where beautifully designed apartments line streets brimming with interesting places to eat and shop.

Site 5 was the second project in this precinct for Mirvac, comprising of 304 premium apartments with basement parking and landscaping.

Best Bar provided 2,500 tonnes of reinforcing steel for the structures and surrounds.

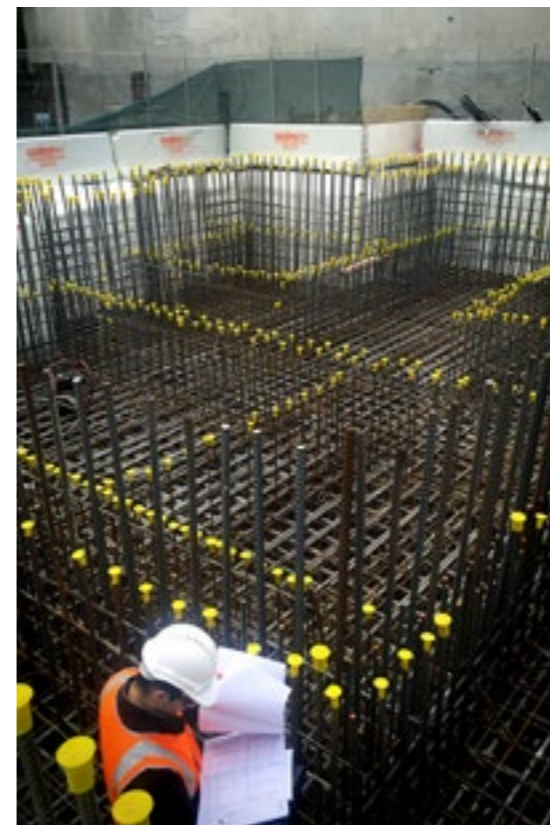


Image Above: Green Square Project, NSW

REONET⁺

TOTAL REINFORCING CONTROL

The smartest way to help you stay in control and access all your reinforcing orders from one device.



Order anytime

7 days a week 24 hours a day you have the ability to order online from home on the couch, in the office or on site. Your order is then processed quickly for pick up or delivery; fitting in with your busy schedule.



It's fast

We know you are busy, so we made it fast and easy, no more phone calls. We are continuously improving features and functions throughout the site to give the best user experience as possible.



Track your order

Track your orders from production through to delivery. With the ability to change your delivery dates on all unconfirmed orders—This gives you the flexibility to choose when you need your reinforcing steel.



Download documents

Do you find yourself or your accounts team constantly searching for invoices and chasing up suppliers? Reonet gives you the ability to view and print all your schedules, quality certificates, invoices, marked drawings and ordering documents from a single device.

It's giving you the freedom to access all information in real time, so you can focus on the build.

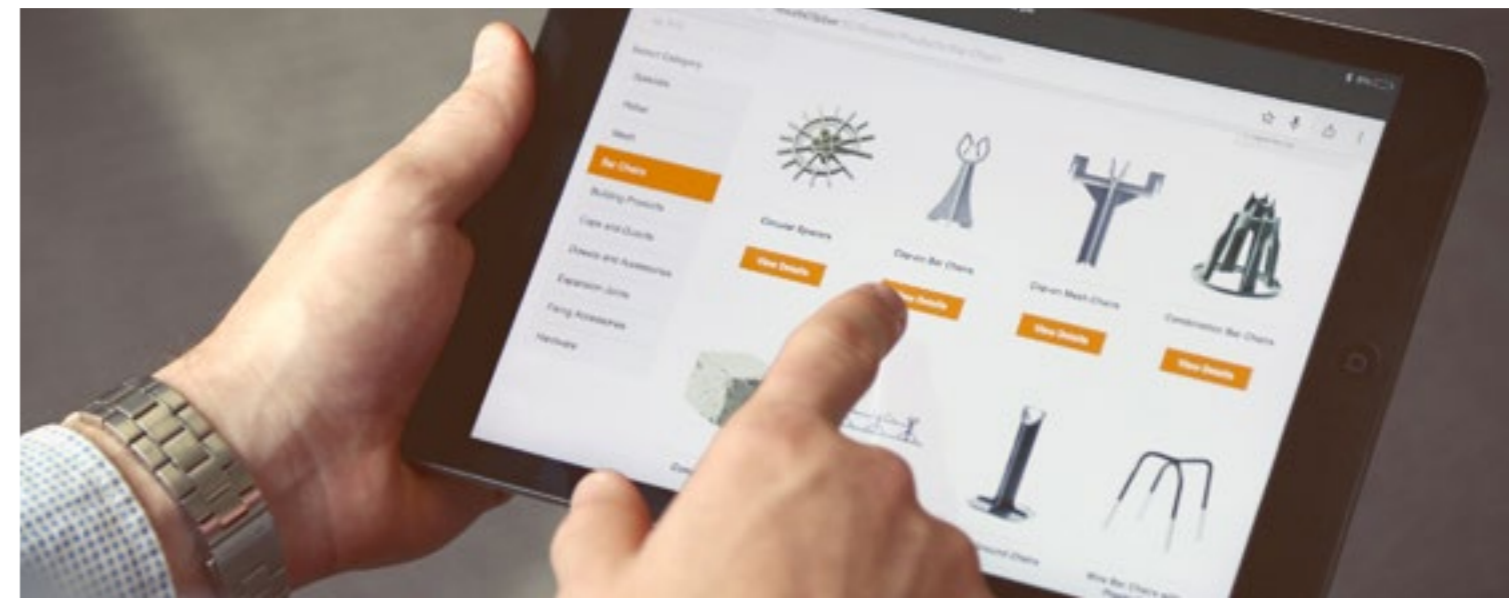
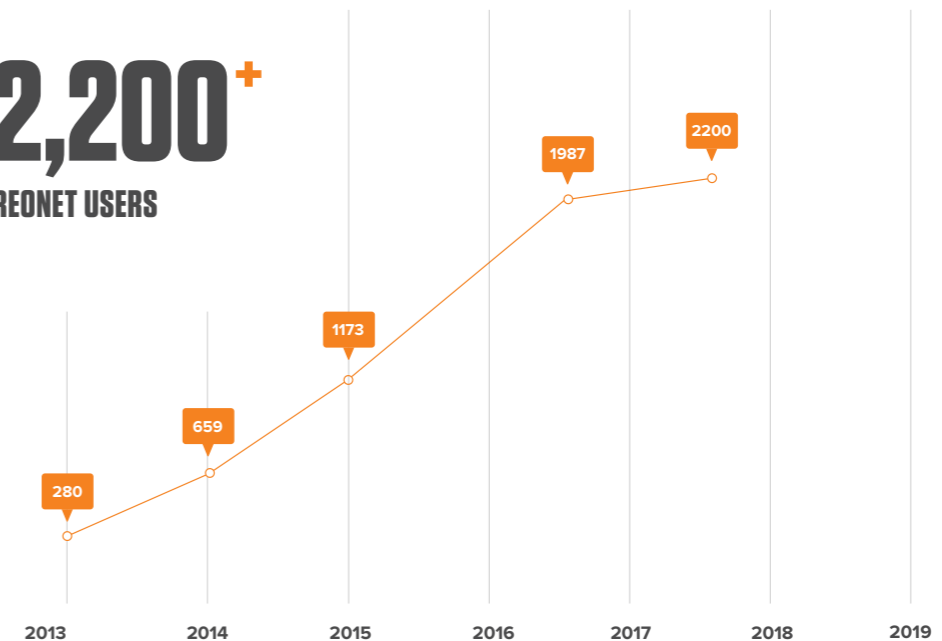
76,000⁺

DOCUMENTS DOWNLOADED

In the last two years from Reonet

2,200⁺

REONET USERS



WITHOUT GREAT QUALITY IT DOES NOT MATTER WHAT SOMETHING COSTS

Our Systems

Our systems allow us to direct additional capital or resources to these functions to effect immediate improvement.

Our materials and processes are third party certified by ACRS. All materials are produced in accordance with AS4671.

WE DO NOT COMPROMISE ON SAFETY AND RISK MANAGEMENT

The Best Bar businesses are committed to ensuring the highest standard Health and Safety in the workplace.

We have an integrated HSEQ software system which efficiently manages all hazard and incident reports and maintains all of our documented health and safety systems and procedures.

Regular safety communication occurs through safety committee meetings, toolbox talks, pre-shift meetings to address concerns and discuss and action areas for improvement.

Safety issues and performance are also communicated to employees through newsletters, BBQs and weekly updates. In addition, factory and office notice boards display important information and reminders.

Ongoing training is also provided for those employees who work in high risk areas; where we have introduced many safety initiatives to ensure the safety of our employees, sub-contractors, visitors and the public.

Site induction, safety signage, safe work instructions and risk management practices are fundamental to achieving a safe workplace; particularly for activities such as load handling, mobile plant, and equipment and working at heights.



**5 YEARS OF
CONTINUOUS
IMPROVEMENT IN,
LITFR, MTIFR, AIFR**

53%

Reduction in AIFR rolling average since 2010

83%

Reduction in MTIFR rolling average since 2010

WE UPHOLD OUR COMMITMENT TO SAFETY AND RISK MANAGEMENT

Fatal 5 Program

Fatal 5 program aimed at ensuring all employees, contractors and visitors are aware of the risk controls in place for these activities.

Logos and a series of posters appear throughout all of our businesses to remind employees that everyone is responsible for safety.

Our aim is for all employees and contractors to return home safely to their families at the end of each work day.

FATAL 5





READY TO
REINFORCE
AUSTRALIA'S
FUTURE?

LOCATIONS

PERTH

East Rockingham
367 Mandurah Road
East Rockingham
Western Australia
6168

E | wa.sales@bestbar.com.au
T | 08 9411 9300

Wangara
100 Callaway St
Wangara
Western Australia
6065

E | wa.sales@bestbar.com.au
T | 08 9303 4950

Hazelmere
6/5 Central Ave
Hazelmere
Western Australia
6055

E | wa.sales@bestbar.com.au
T | 08 9411 9350

MELBOURNE

Truganina
1-3 Distribution Drive
Truganina
Victoria
3029

E | vic.sales@bestbar.com.au
T | 03 9394 5800

Keysborough
94 Indian Drive
Keysborough
Victoria
3173

E | vic.sales@bestbar.com.au
T | 03 9394 5836

Somerton
8 Newton Drive
Somerton
Victoria
3062

E | vic.sales@bestbar.com.au
T | 03 9394 5885

DARWIN

Winnellie
6 Sadgroves Crescent Winnellie
Northern Territory
0820

Postal Address:
PO Box 36121,
Winnellie
Northern Territory
0821

E | nt.sales@bestbar.com.au
T | 08 8942 9900

SYDNEY

Prestons
Building 2, 43-47 Lyn Parade
Prestons
New South Wales
2170

E | nsw.sales@bestbar.com.au
T | 02 9607 1555

Smeaton Grange
1/16-18 Sedgwick St
Smeaton Grange
New South Wales
2567

E | nsw.sales@bestbar.com.au
T | 02 9607 1550

ADELAIDE

Pooraka
35-37 Maxwell Road
Pooraka
South Australia
5095

Postal Address:
PO Box 567,
Ingle Farm
South Australia
5098

E | sa.sales@bestbar.com.au
T | 08 8161 4200

BEST BAR REINFORCEMENTS
CAPABILITY STATEMENT



Head Office
East Rockingham
367 Mandurah Road
East Rockingham
Western Australia
6168

E | support@bestbar.com.au
T | 1800 237 8227

Connect with us



www.bestbar.com.au

